

Overview

The XJXDP adapter complements the XJLink2 by providing a very low impedance drive capability, down to 25 Ohms or less. The small form factor board can be directly mounted onto an Intel® eXtended Debug Port (XDP) for minimum wire lengths and maximum performance, or connected via a 2 mm 20-way ribbon cable.

Low voltage, low impedance

Some devices, notably Intel processors, use low voltage signaling with low value termination resistors typically in the range 0.8 V to 1.2 V and 25-50 Ohms. The XJXDP uses purpose designed low impedance drive circuits to get the highest noise margins and fastest JTAG clocking speeds.

Precision line receivers

Precision, ultra-high speed comparators, with resistor-programmable hysteresis are used as uplink receivers for the highest receiver noise margin and speed performance.

Flexible

In addition to the XDP port connector, a standard 2mm pitch header is provided to allow ribbon cable connection for non-XDP applications. The XDP connector can also mate with a flex XDP-to-XDP extender cable.

Tracking power supply

The XJXDP uses a high efficiency tracking power supply to track the DUT's VTT output (voltage reference), enabling it to drive low impedance downlink signals with minimal loading of the DUT. The XJXDP can be powered directly from the XJLink2 or from an external power supply.

Controlled rise/fall times

Low impedance downlink drivers can produce extremely fast edges that can cause undesirable overshoot, leading to loss of signal integrity and reliability. The XJXDP signal drivers moderate rise/fall times to enable the highest clock speeds, with the greatest reliability and highest test throughput.

XJLink2 Compatible

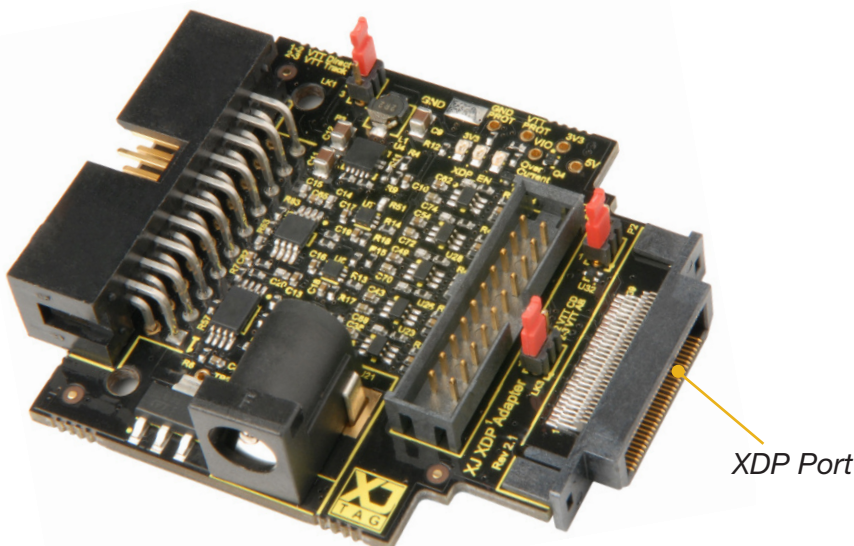
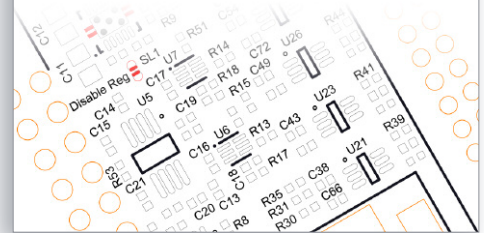
The XJXDP connects to the XJLink2 (or XJLink) via a standard 20-way ribbon cable and level-translates 8 signals, divided between 3 uplink and 5 downlink.

Key Benefits

- Provides signal matching to improve JTAG performance
- High efficiency tracking power supply
- Supports non-XDP applications
- Optimised for performance

Features

- Direct connection to XDP port
- Flex cable option for tight access situations
- High signal integrity
- TCK clock frequencies up to 100 MHz
- Flexible power supply voltage: 5 V to 15 V
- VTT tracking internal power supply
- Supported I/O voltages from 0.6 V to 3.3 V
- 8 channels configured as 3 uplink, 5 downlink
- Plugs directly into XJLink2 controller
- Completely transparent to XJTAG software



Order code

XJXDP board: XJTAG-XDP-0010
Contact your local distributor for prices.

Distributor / Technology Partner